

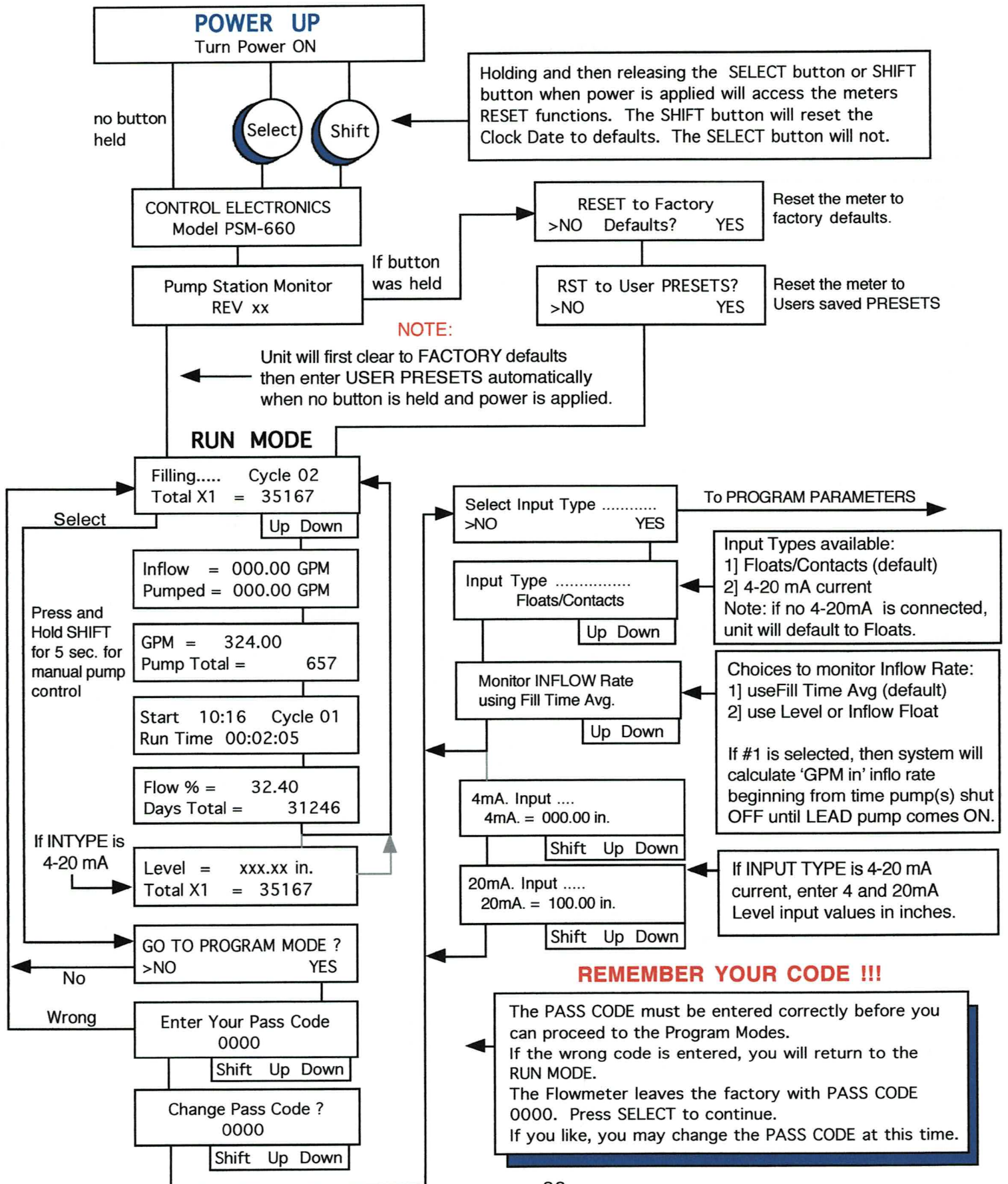
# *Using The PSM-660 FLOWCHART*

## **OPERATING INSTRUCTIONS**

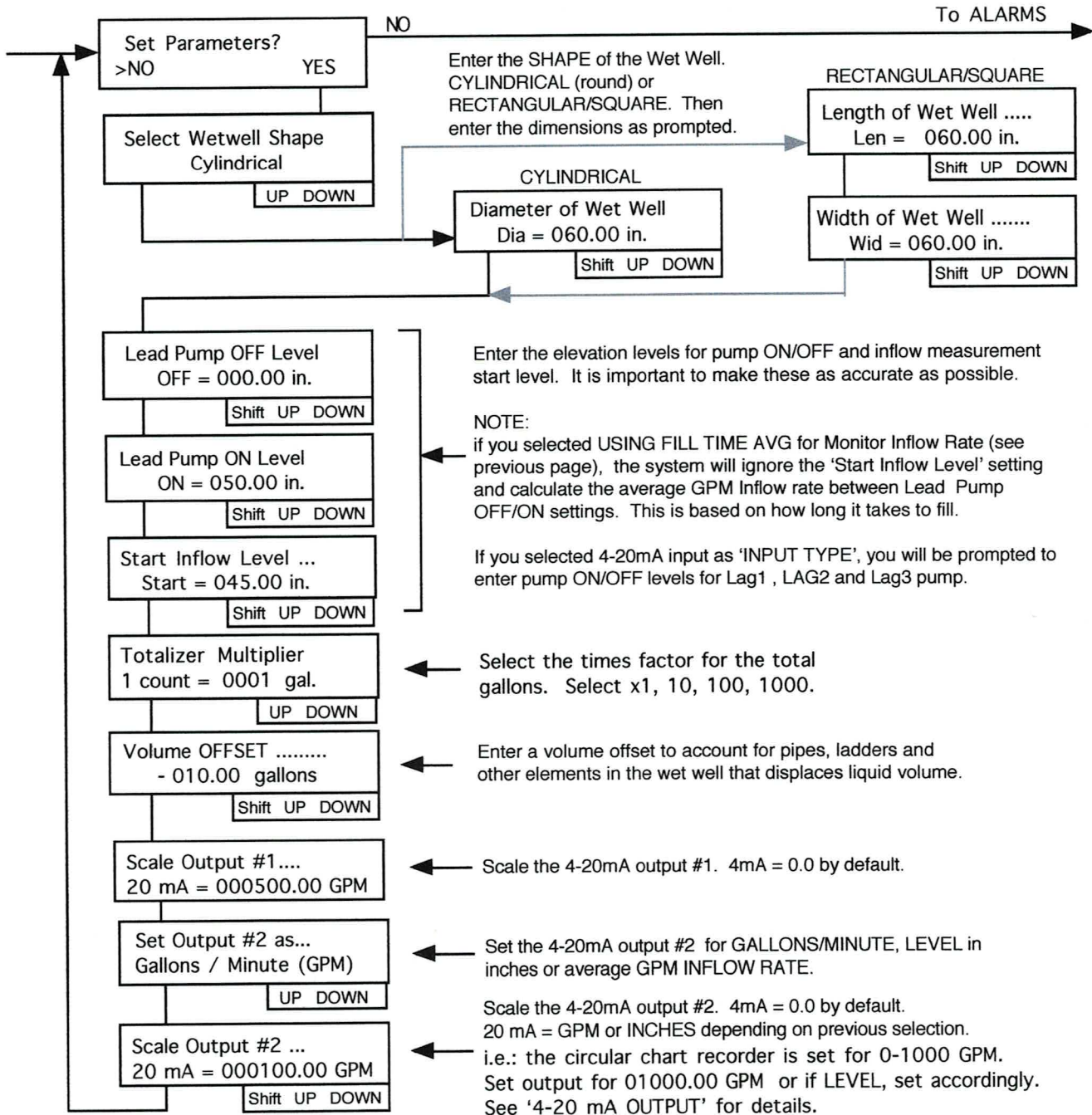
When power is first applied, the PSM-660 Pump Station Monitor will run through its POWER-UP windows. It should display 2 windows indicating name of manufacturer, model number, type of meter and the software revision number. The process takes a few seconds and will then enter the RUN MODE. The Monitor will display the window that was ON (selected) prior to turning power 'OFF'. To select or scroll through the RUN MODES, use the UP/DOWN buttons. Each press of the button takes you to the next window. Selecting any of the RUN MODES will not affect the 4-20 mA. output or any of the programmed settings. The Monitor begins monitoring the wet well automatically.

To enter the **PROGRAM MODE**, press the SELECT button. You will be asked **GO TO PROGRAM MODE?**. Press 'YES'. You will be asked for the **PASS CODE** before you can enter into the **PROGRAM MODES**. The pass code is 0000 when it leaves the factory and will remain this until you change it. Press SELECT. If you like to change the code at this time, use the SHIFT, UP and DOWN buttons to enter your new pass code then press SELECT. This stores your new code. You now have access to the program section. If the incorrect pass code is entered, you will be returned to the RUN MODE. **REMEMBER YOUR PASS CODE!!!**

Once you entered the **PROGRAM MODE** you can scroll through it by pressing the SELECT button. The SELECT button performs three functions: 1] NO, 2] ENTER and 3] NEXT WINDOW. Use the SHIFT, UP and DOWN buttons to change the values in each window as needed. The DOWN button is used to select YES when data values are not displayed. The Programming Flowchart will guide you through the many features and functions available to you. A brief explanation for each window is provided in the flowchart.

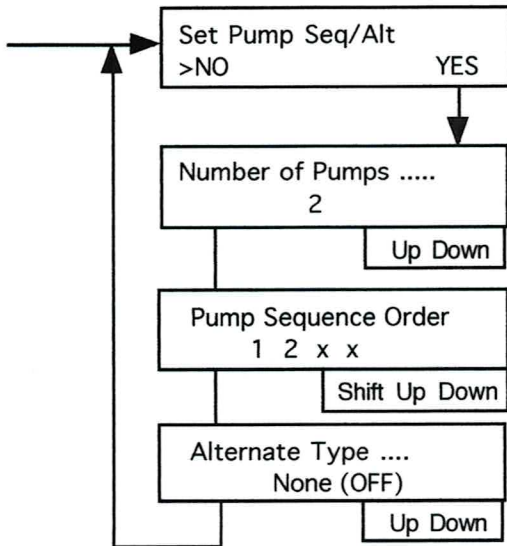


## PROGRAM MODE





**PUMP CONFIGURE**



To ALARMS (below)

Enter the number of pumps to control, the sequence order and alternate type. Max number of pumps is 3 with floats (note: high alarm could be used for 4th pump) or 4 with 4-20 mA input. 'x' in the sequence order means not used.

Alternate types are: **None (OFF), Lead/Lag, Rotate, Lead/Lag per 24 hour or Rotate per 24 hour**. Lead/Lag will alternate the first 2 pumps in the sequence order. Rotate will look at the Pump sequence Order and rotate thru them, advancing after each cycle. i.e. sequence order is 1 3 2 x. Next order is 3 2 1 x then 2 1 3 x then 1 3 2 x etc.

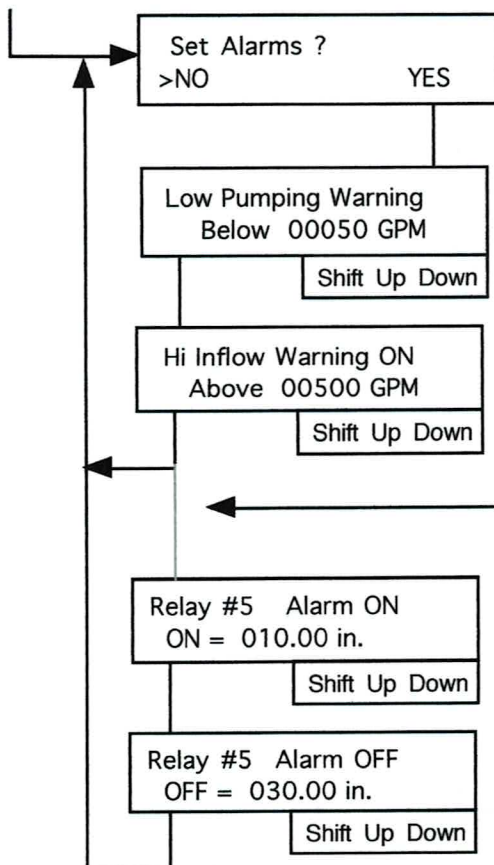
Lead/Lag per 24 hour or Rotate per 24 hour will perform the function once every 24 hours.

Note:

In order for pump 3 and/or 4 to function, you must enter the number of pumps as 3 or 4 etc. and set pump sequence order to show pump.

**If you are not controlling the pumps with the PSM-660 unit (i.e. monitoring flow volume only), set Alternate type to NONE (OFF).**

**ALARMS**



To SET COMMUNICATIONS

Alarm will write LOW PUMPING warning on the display if the calculated GPM pump rate is less than value entered. Event will be logged

Alarm will write Hi INFLOW warning on the display if calculated inflow GPM rate is above the entered value. Event will be logged

If INTYPE selected is 4-20 mA input, you will be asked to enter Relay #5 alarm points.

Alarm will energize if Level exceeds value entered.

Note:

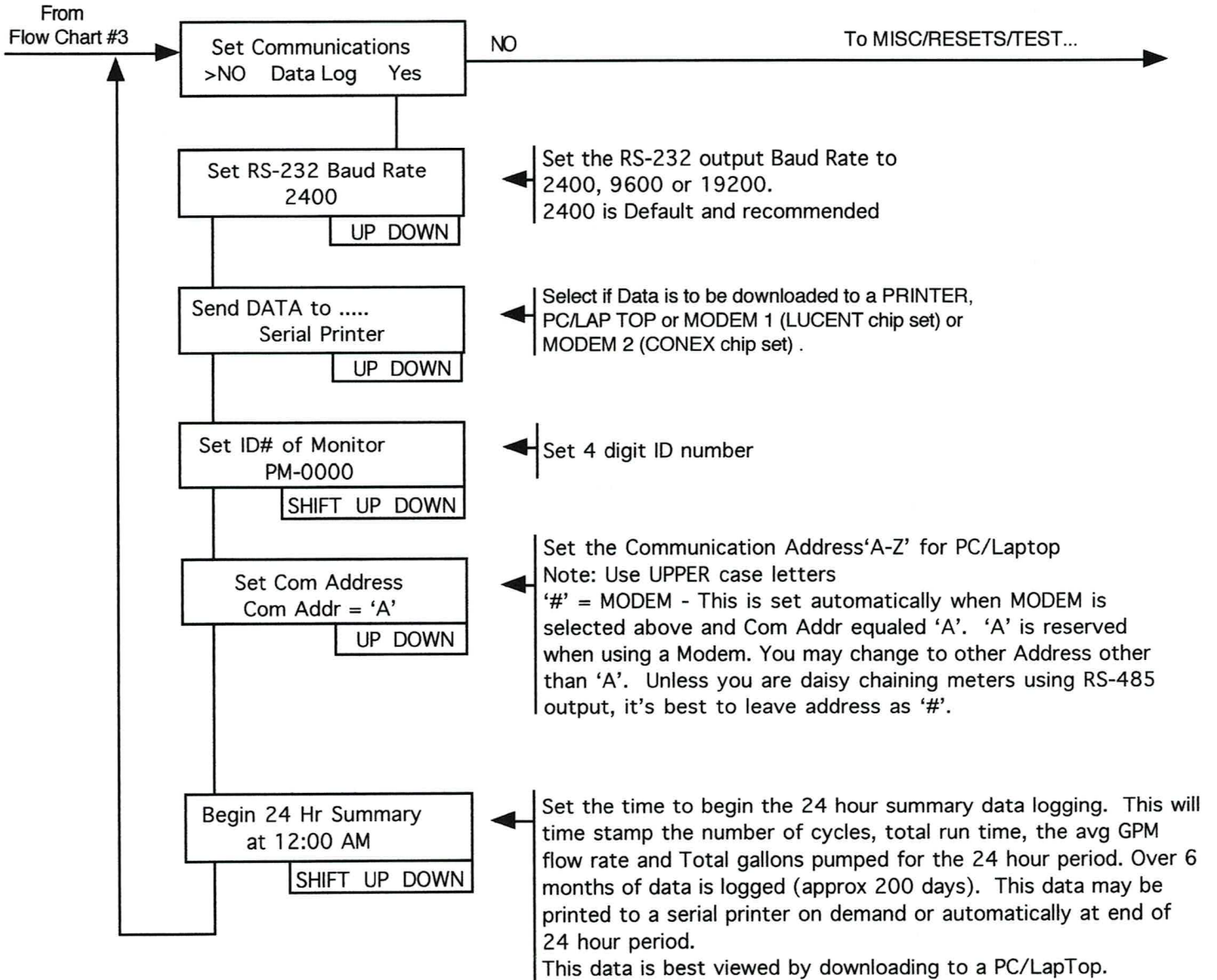
if OFF level is greater than ON level, relay 5 will be a LOW ALARM.

If ON level is greater than OFF level, relay 5 will be a HIGH ALARM.

Relay 5 will energize (turn ON) if 4-20 mA. Input signal is lost.

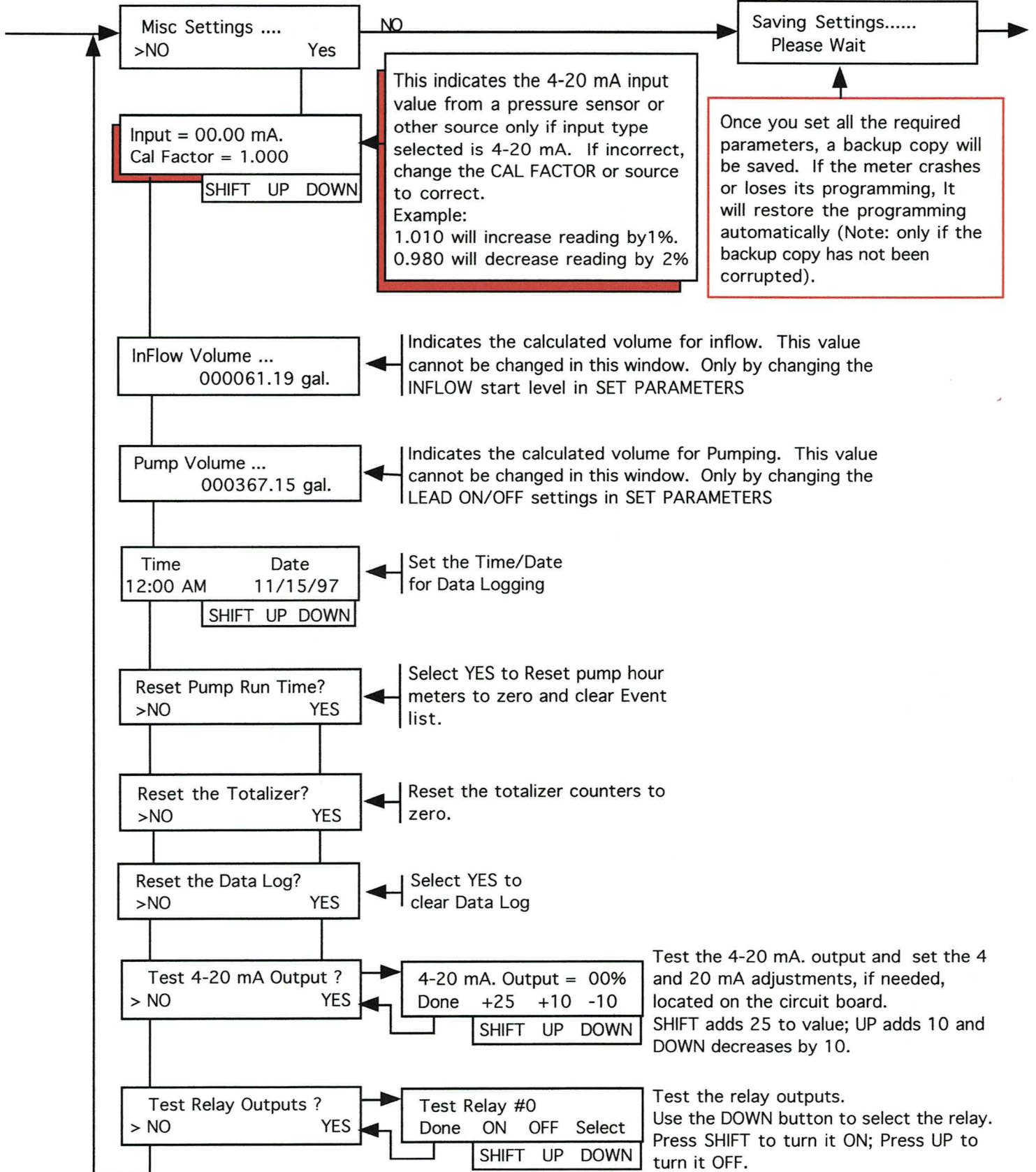
**NOTE:** If High or Low alarm is sounded, press any button on the front panel to silence the alarm (deenergize relay #4 and/or relay #5).

COMMUNICATIONS / DATA LOG

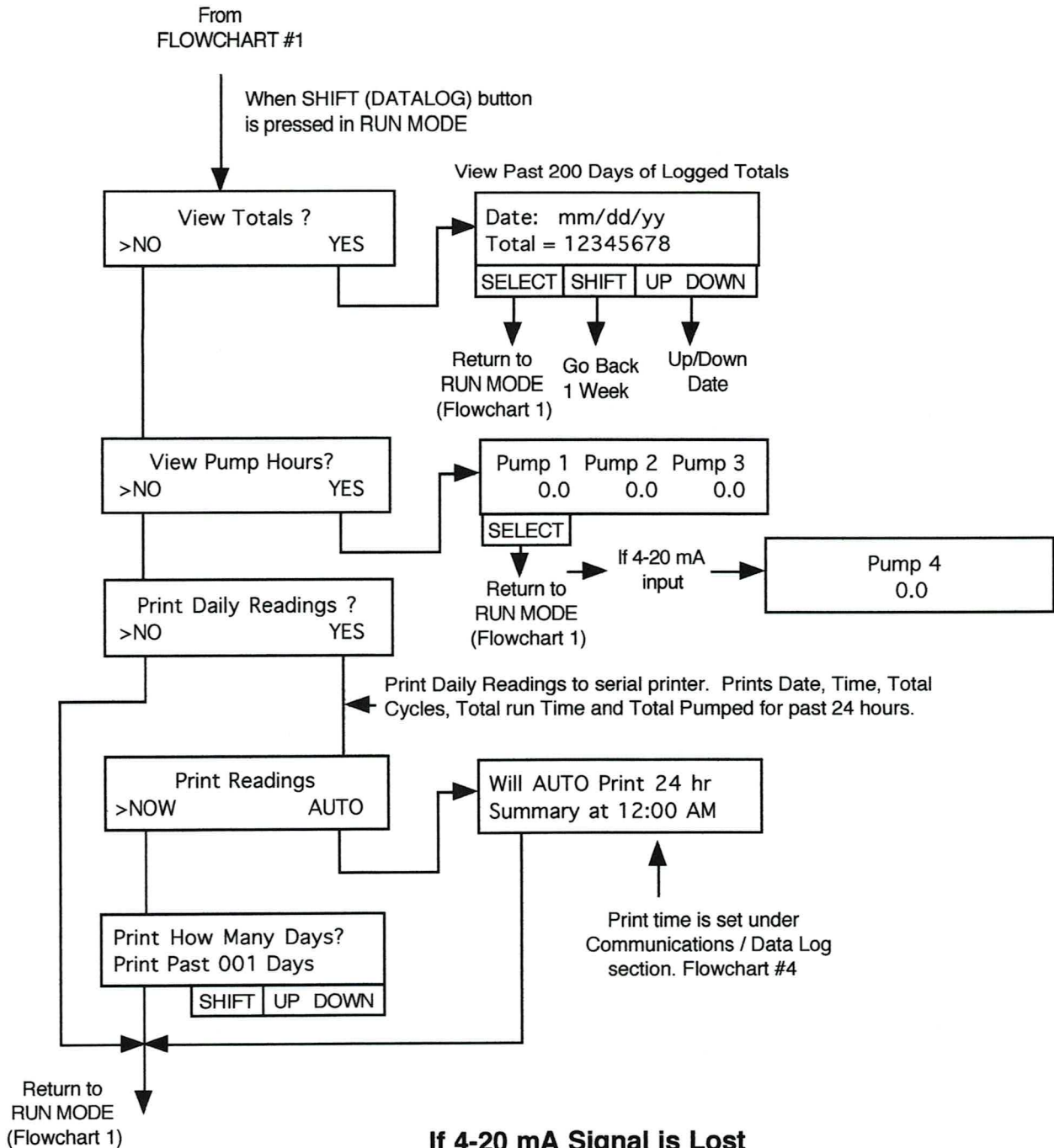


**MISC MODE**

Return to RUN mode  
Flow Chart 1







**If 4-20 mA Signal is Lost**

If the PSM-660 system loses the 4-20mA signal, this warning will be displayed and relay 5 will turn ON. If this occurs, check all wire connections / splices for damage or 4-20ma source. Press any key to remove warning and again to turn relay 5 OFF. If 4-20mA returns, the warning will be removed and relay 5 will turn OFF.

Display Warnings

4-20mA Signal Lost  
Check Sensor & Wires

Low Pumping... OR  
HI Inflow

Low Pumping or Hi Inflow displayed are only warnings, no action is taken. Low Pumping may indicate a clogged pump. Hi Inflow may indicate a defective INFLO float.